

**PHONE:** (07) 5411 4209  
**OR** (02) 8004 3333 (Option 2)

**WEBSITE:** [tbafirefly.com.au](http://tbafirefly.com.au)  
**EMAIL:** [sales@tbafirefly.com.au](mailto:sales@tbafirefly.com.au)

### MATERIAL DESCRIPTION

Firefly Intustrap is a high pressure intumescent wrap, which comes in a 25m long coil, easily cut to the required length using a long bladed Stanley knife. Used to wrap around thermally lagged copper pipes and small PVC /HOPE Pipes. In a fire the intumescent will expand to replace the gap left by the thermal insulation and plastic pipes as they melt away/break down, maintaining the full integrity/insulation of the fire seal.

### CERTIFICATION

Tested both horizontally and vertically  
Tested in accordance with AS1530.4-2014  
Assessed in accordance with AS4072.1-2005

### DIMENSIONS

25m Long x 60mm Wide x 4mm Thick

**FRL -/240/240**

### APPLICATIONS

The common practice of cutting away thermal lagging to fire stop directly to a chilled water pipe, is currently having some extremely adverse effects on buildings. Namely cold bridging and condensation, leading to damp walls and ceilings below and around the chilled water pipe which may also eventually damage the integrity of the fire wall or floor.

Intustrap has been designed to allow thermally insulated copper pipes to pass through fire walls and floors, without the need to cut away the thermal insulation to maintain the compartment FRL.

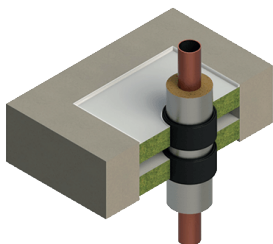
Simply cut the required length of Intustrap, wrap it twice around the thermally lagged pipe where it passes through the fire compartment. Then fire stop around the perimeter of the Intustrap using Intubatt and Intumastic.

In addition, the Intustrap has been tested around small PVC and HOPE pipes and is installed in the same manner as above.

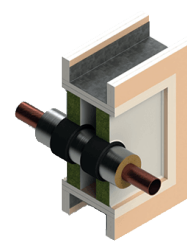
For specific applications and FRLs please refer to the referenced Compliance Reports.

Must be installed in strict accordance with the construction details contained within the compliance reports.

TBA FIREFLY  
**INTUSTRAP**



Thermally Lagged Copper Pipe Protected by Intustrap in a Masonry Floor



Thermally Lagged Copper Pipe Protected by Intustrap in a Fire Rated Plasterboard Wall